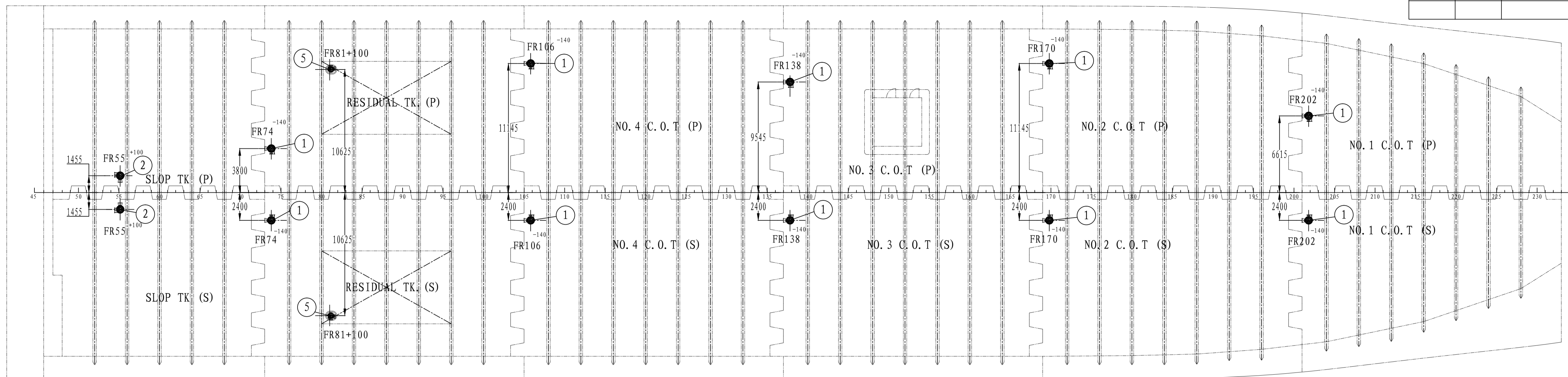
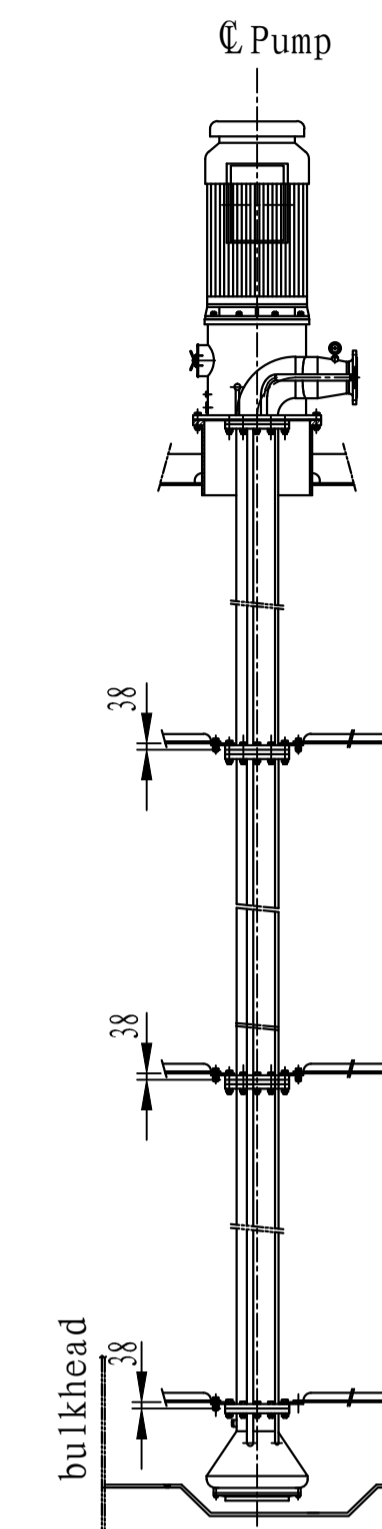


UPPER DECK

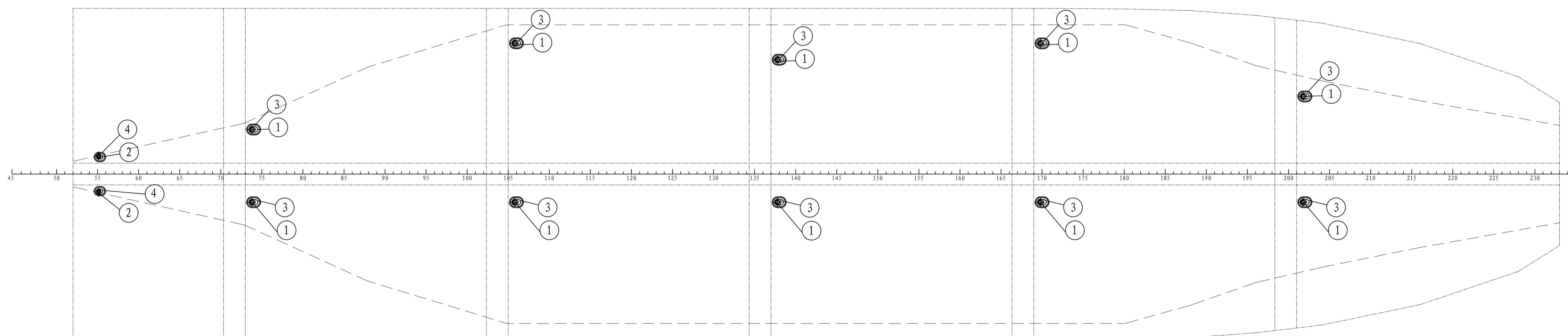
REVISION RECORD					
标记	数量	更改依据	更改人	批准	日期
MARK	QUANTITY	REVISION BASIS	REVISER	AUTHORIZE	DATE



SUPPORT POSITION OF CARGO PUMPS
1: 40



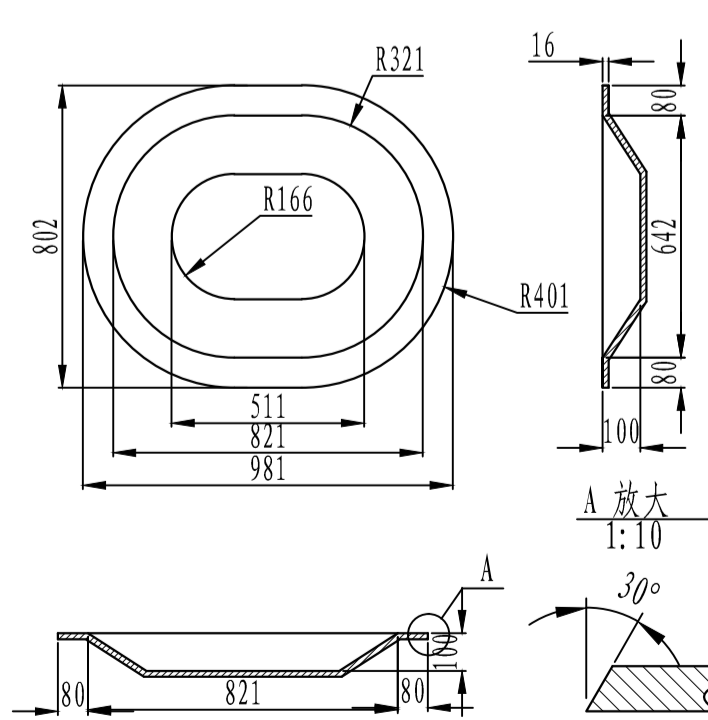
INNER BOTTOM



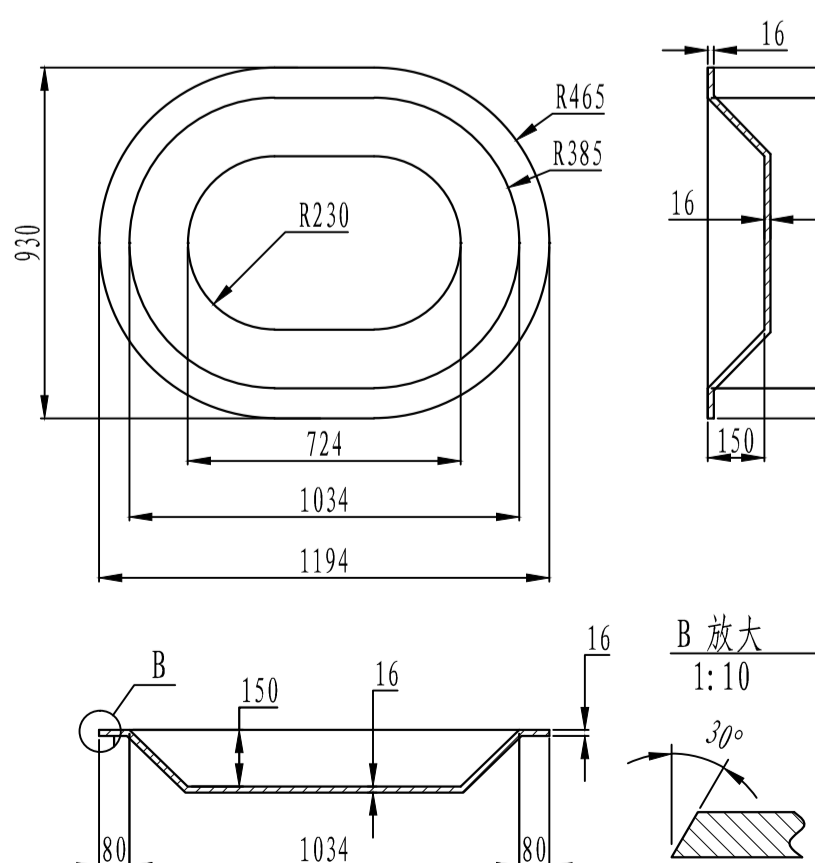
- 注:
- 管子布置时,应注意泵的维护空间要求。
 - 油围井和船底板焊接后要磨平。
 - 油围井是根据货油泵厂家建议设计。
 - 除标明外,焊脚高度为 6 mm。

- NOTE:
- When pipe arranged, pay attention to the free space
 - Grind flat after the deepwell and inner bottom welding.
 - The design of deepwell is on the basis of the cargo pump maker's recommendation.
 - The welding seam are 6mm except marked for pump maintenance.

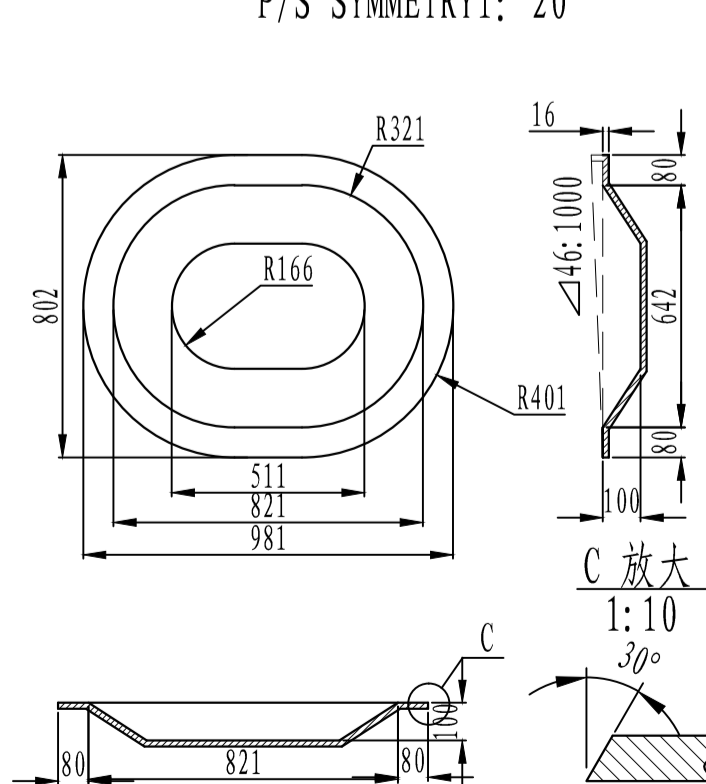
SLOP PUMP DEEPWELL
1: 20



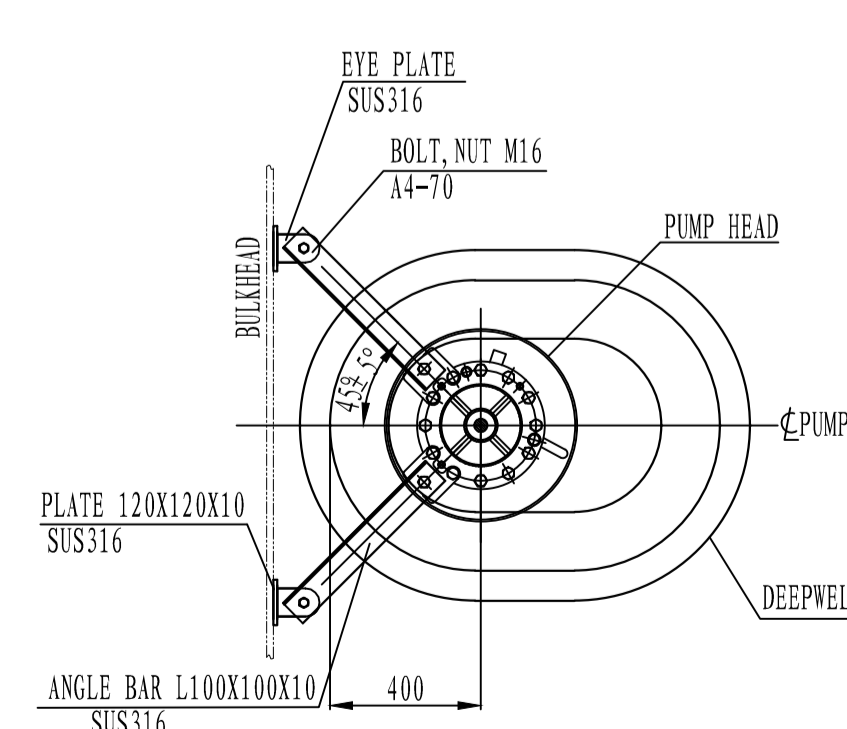
CARGO PUMP DEEPWELL
1: 20



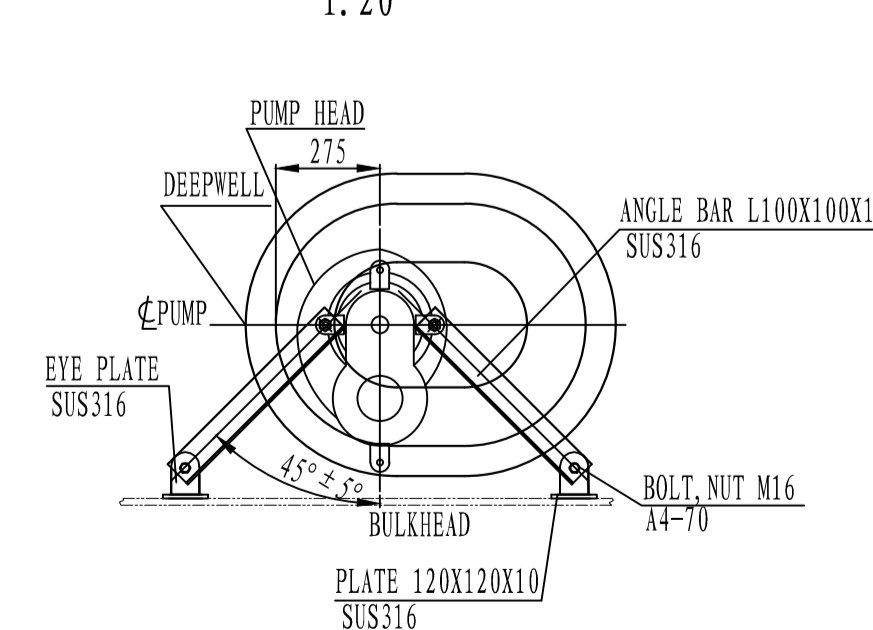
RESIDUAL PUMP DEEPWELL
P/S SYMMETRY: 20



CARGO PUMP HEAD FITTING DETAIL
1: 20



SLOP PUMP HEAD FITTING (P) DETAIL
1: 20



6	油渣泵吸油井 DEEPWELL OF RESIDUAL PUMP	2	不锈钢 STAINLESS	SUS316L	140	280	
5	油渣泵 RESIDUAL PUMP	2	组合 ASSEM.		800	1600	including motor
4	污油泵吸油井 DEEPWELL OF SLOP PUMP	2	不锈钢 STAINLESS	SUS316L	139	278	
3	货油泵吸油井 DEEPWELL OF CARGO PUMP	10	不锈钢 STAINLESS	SUS316L	139	1668	
2	污油泵 SLOP PUMP	2	组合 ASSEM.		~1771	3542	including motor
1	货油泵 CARGO PUMP	10	组合 ASSEM.		~2737	27370	including motor

NO. 序号	CODE 代号	NAME & SPEC. 名称及规格	QTY 数量	NAME 名称	TYPE 牌号	UNIT 每件	TOTAL 共计	REMARKS 备注

CSG 船国际 广州广船国际股份有限公司
GUANGZHOU SHIPYARD INTERNATIONAL COMPANY LIMITED

图号 YARD REF. NO. K2111240
50,000DWT 化学品/成品油轮
50,000DWT CHEMICAL/PRODUCT OIL TANKER

第 1 页 PAGE NO. 共 2 页 TOTAL
图号 NO. D-2

比例 1:200 SCALE
材料 MATERIAL
重量 WEIGHT (kg)
修改版本 REV.

会签

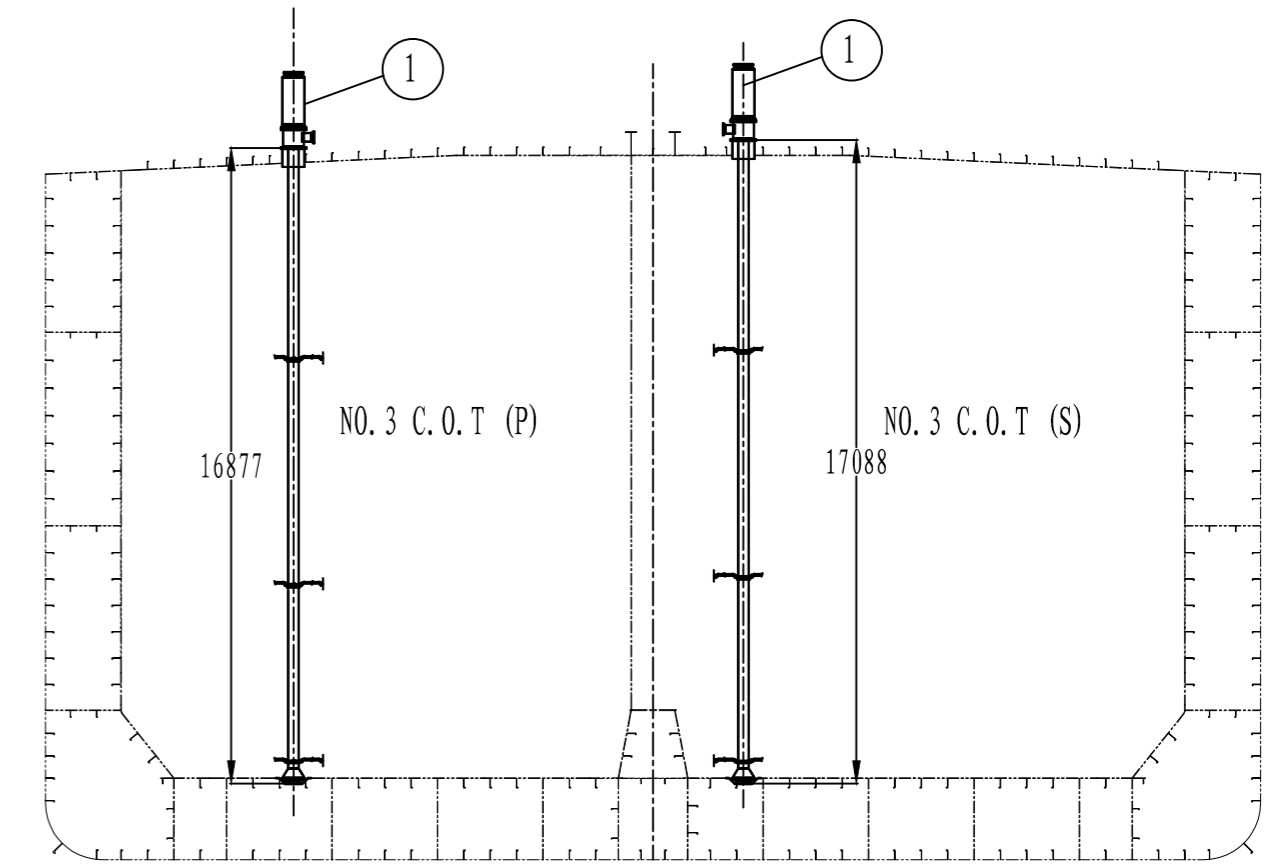
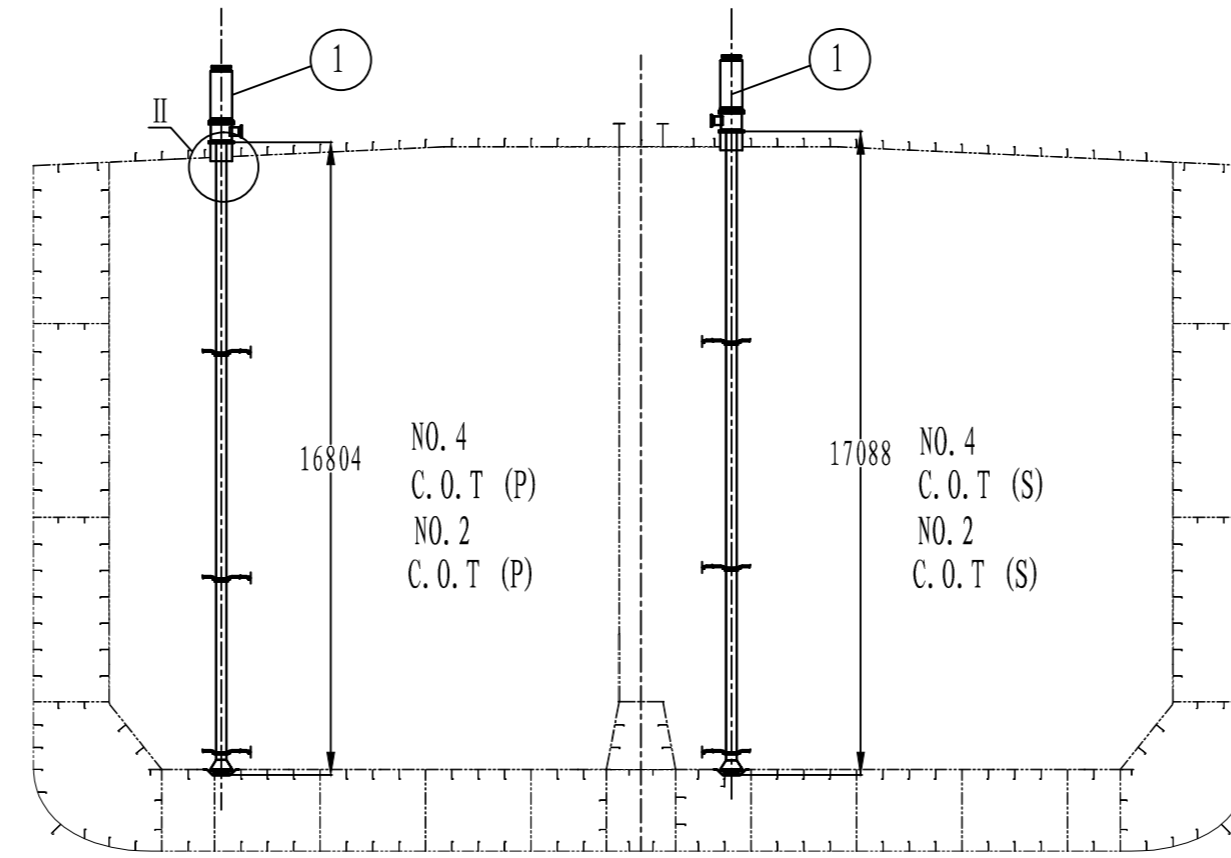
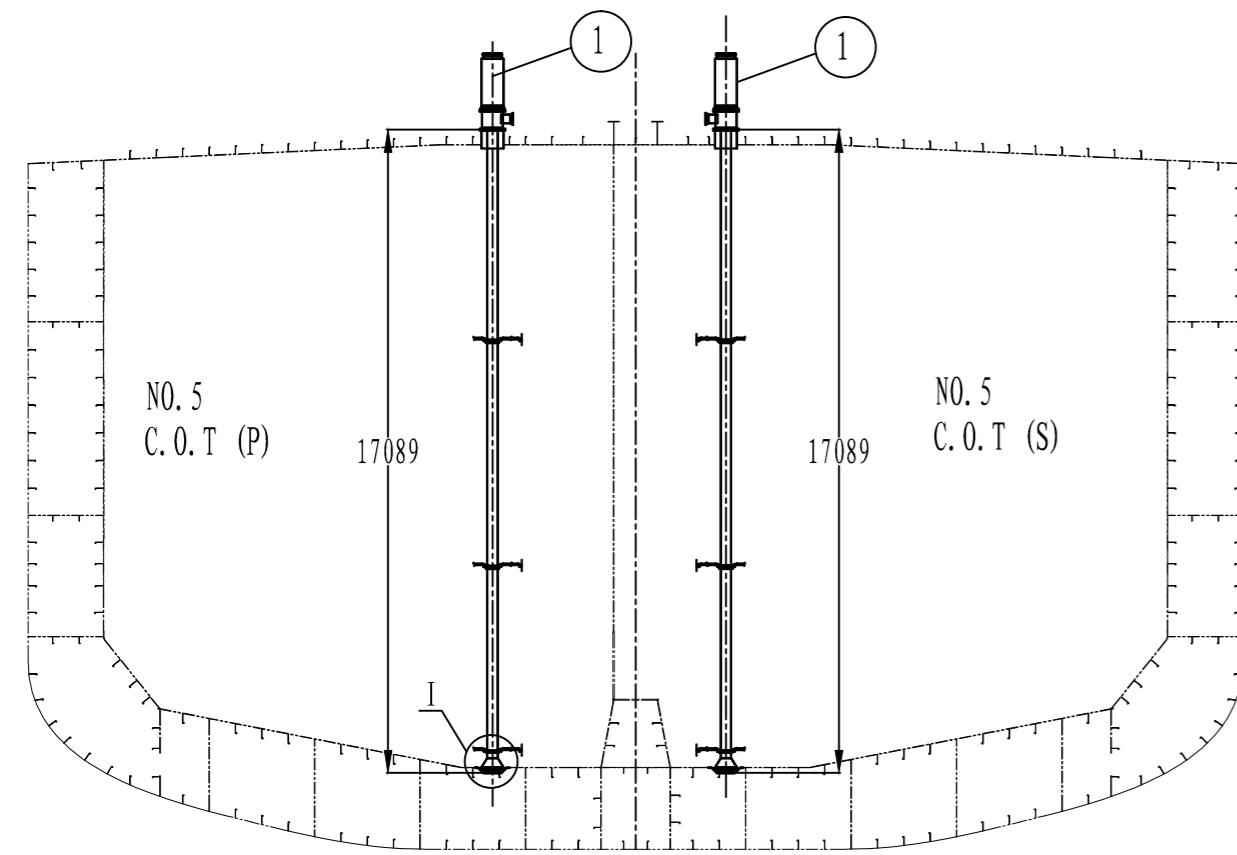
图纸面积
0.50 m²

FR106-140

FR170-140 ARE SIMILAR

FR74-140

FR138-140



FR202-140

FR55+100

FR81+100
1: 100

RESIDUAL PUMP HEAD FITTING DETAIL
1: 20

